

# Photo Consent Form

(SCHOOL NAME)

Gives permission to Pro Carton and

(COMPANY NAME)

to take photographs and / or video of its children and grants full rights to use the images resulting from the photography / video filming, and any reproductions or adaptations of the images for publicity or other purposes for the TICCIT programme. This might include (but is not limited to), the right to use them in printed and online publicity, social media, press releases and funding applications.

PRINT NAME:

DATE:

POSITION:

SIGNATURE:

SCHOOL NAME:



# Make your own Planter

Recycle a dry food, or other dry goods, carton to make your sapling planter



Cut down a used carton (a cereal box is ideal) approx. 13cm height.



Cut in half.



Slot one half inside the other.



The planter is nearly ready.



Carefully make holes in the base and sides.



Line with newspaper, tissue or kitchen towel to prevent the soil falling out before planting.

Your planter is now complete.  
Time to plant.



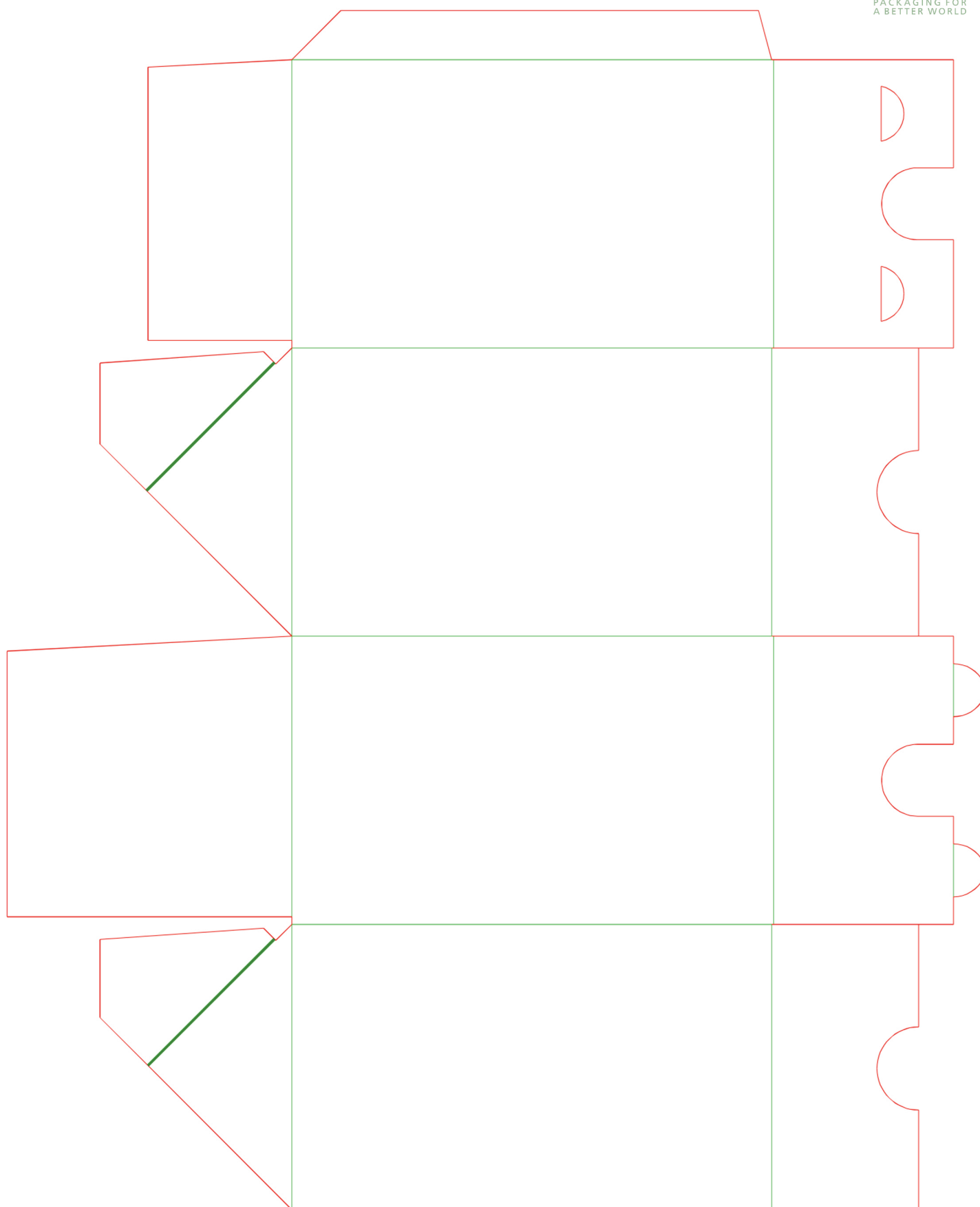
# Sapling Aftercare Instructions

Dear Parent or Guardian,

Today your child learned about how trees are grown and harvested for the making of paper and then turned into packaging materials that are recyclable and renewable. As part of this programme, your child was also provided with a sapling that they planted into a cardboard carton. The sapling is a silver birch, a medium-sized tree native throughout Europe. It has light green triangular shaped leaves, drooping branches which form a light canopy and a white bark. Below are instructions on how to prepare the sapling for planting in the ground. May you enjoy watching this tree grow for years to come!

1. If your carton planter does not already have holes in it, make a few cuts in the bottom and sides of the carton with a knife.
2. Water the sapling and then ideally, place the sapling in a protected area out of the wind or sun for a few days to harden it off.
3. Select an appropriate location outside with enough space to contain what will become a mature tree. If you do not have room outside to plant a tree, you can plant it in a large bucket or decorative pot.
4. To avoid drying out the root hairs, it's best not to plant the sapling on a bright sunny day, transplant the seedling and carton on an overcast day or alternatively plant it in late afternoon or early evening when the sun has gone down.
5. Dig a hole in the ground large enough to contain the carton.
6. Place the carton in the hole with about one inch of the carton projecting above ground and lightly pile the soil up around the carton. The sides of the carton will force the water down into the soil and the roots will follow through the bottom of the carton.
7. To start, water the sapling with about a litre of water once a week. Add a day between waterings as the roots grow deeper.
8. Eventually the carton will decompose, leaving a growing tree.





## Sapling Planter - Carton cutter guide

Dimensions - 76.20mm x 76.20mm x 127mm